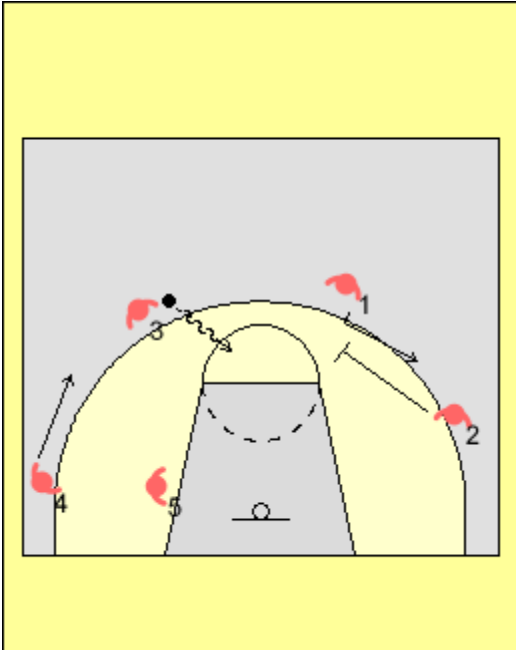


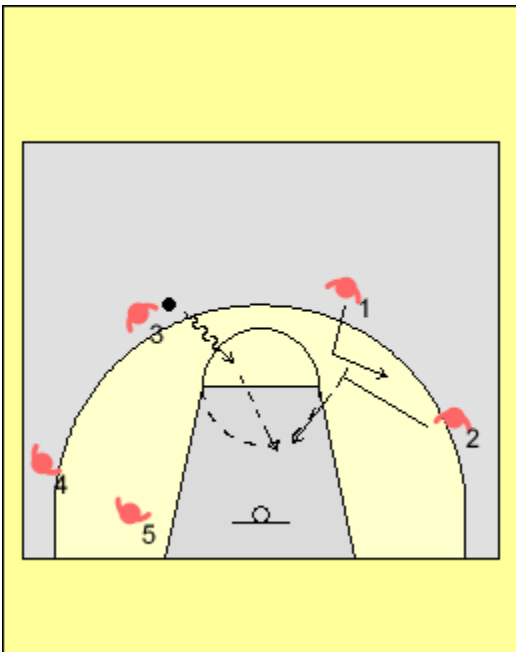
The action can now be repeated By #3 attacking the middle and #2 setting the flare screen.

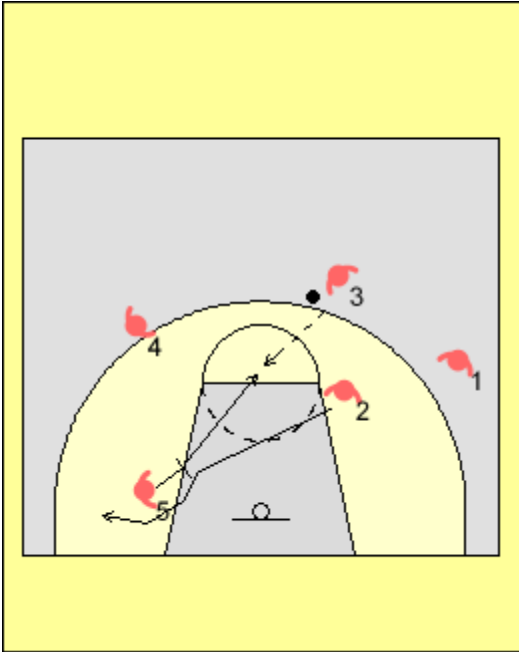
Also note that you still create great post side triangle if you have an advantage in the post.



Slip the flare screen

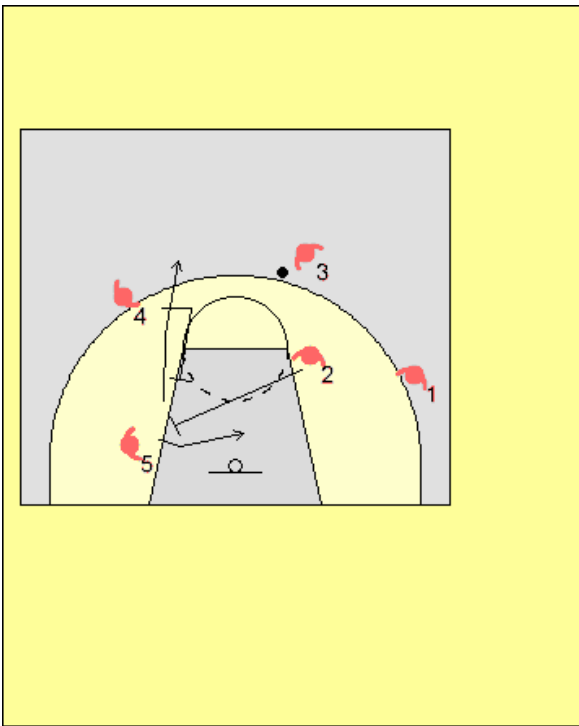
This was used very often when the defense cheated on the flare. The screener would slip the screen and cut to get the ball. Some times the player would cut to the high post if #3 did not penetrate as deep. A great place to get the ball any time in the shot clock.





Slip the pin down screen

Another option used was slip of the pin down to get the ball to the post player at the foul line or front of the rim. After the pass there are great back screen and pin down option available.



Flex Action

Often they would turn it into a flex action where the cutter would screen for the post.